

HANDHELD INFRARED THERMAL IMAGER

E300 E600



3.5" LCD touch screen



Object temperature range: -20°C ~+410°C



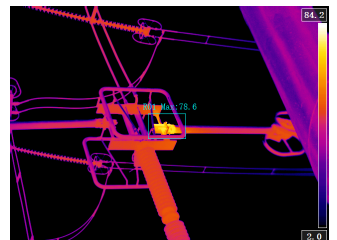
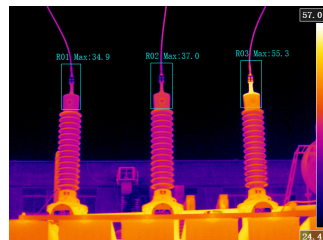
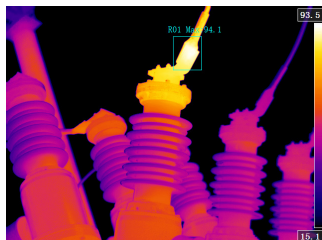
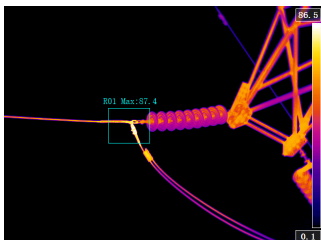
Better performance with $\pm 2^{\circ}\text{C}$ as accuracy



Support WIFI transmission



IP54 protection level



SPECIFICATIONS

Model	E300	E600
Detector type	Uncooled FPA, VOX material	
IR Resolution	384x288	640x512
Thermal Sensitivity/NETD	< 40mK (@30°C)	
Spectral Range	8~14μm	
Field of View	24°x18°	
Spatial resolution (IFOV)	1.3mrad	0.66mrad
Focus	Manual	
Focal Length	13mm	18mm
Minimum focal distance	0.3m	
Display	3.5-inch sunlight-readable display, 640x480 pixels	
Temperature measurement		
Object temperature range	-20°C~+150°C (low temperature range)/0°C~+410°C (medium temperature range)	
Optional temperature range	+300°C~+650°C/+300°C~+2,000°C/other ranges (high temperature range)	
Temperature measurement accuracy	±2°C or ±2% of readings	
Visible light		
Digital camera	Built-in 500W pixel digital camera with LED light	
Laser		
Laser pointer	support	
Image display		
Palette	10 color palettes	
Touch screen	Capacitive touch screen	
Display mode	Thermal imaging, visible light, dual light fusion, picture-in-picture, and IMIX	
Wireless transmission		
Bluetooth	Support Bluetooth headset playback	
WIFI	Support, support preview SD card pictures through WIFI	
4G (optional)	Transmit real-time images to mobile phones via 4G, view cloud images	
Measurement analysis		
Temperature measurement settings	10 points, 10 boxes, 5 lines at the same time, including maximum/minimum/average values	
Full screen maximum/minimum temperature	Support, automatically capture the highest/lowest temperature of the full screen	
Digital zoom	1×, 2×, 4×, 8×	
Isotherms	Supported	
Radiance correction	Automatic, based on input values of emissivity	
Atmospheric transfer correction	Automatic, based on input values of distance, atmospheric temperature and relative humidity	
Alarm		
Alarm method	Automatically sound and light alarm for temperature above or below the set value	
Satellite positioning (optional)		
GPS	For outdoor use, the screen displays the latitude and longitude of the device's location, and the photos taken and saved can be displayed with latitude and longitude in the analysis software	

SPECIFICATIONS

Image storage	
Storage method	32G high-speed SD card
Infrared image format	.jpg (including full temperature data)/.png (including full temperature data)
Visible light image format	.jpg
Infrared video format	H.264 or full-radiation infrared video
Voice annotation	60-second voice annotation, stored with the image
Text Annotation	Preset text can be selected and stored with the image
Video output	
Video output	HDMI
Video output interface	Micro HDMI interface
Power system	
Battery type	Removable rechargeable lithium battery
Power supply voltage	DC12V
Battery operating time	General use>4 hours at 25°C
Charging method	Double-bay charger or car charger
Power saving mode	Sleep mode
Physical parameters	
Weight	700g (including battery)
Dimensions	257×102×105 (mm)
Environmental parameters	
Operation temperature	-20°C~55°C
Storage temperature	-40°C~70°C
Humidity (operating and storage)	≤95%, non-condensing
Packaging level	IP54
Tripod interface	1/4" -20-UNC
Other parameters	
Analysis software	Windows 7 and above, secondary analysis, infrared detection report and other functions