

# WIRELESS DETECTION SYSTEM FOR MULTI-FUNCTION EQUIPMENT STATUS

HK-WY30-A    HK-WY30-B



Independent power supply by solar panel



IP66 waterproof and dustproof



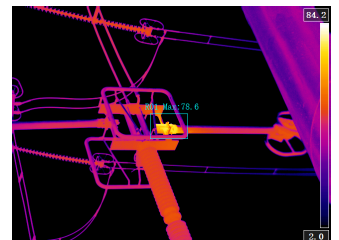
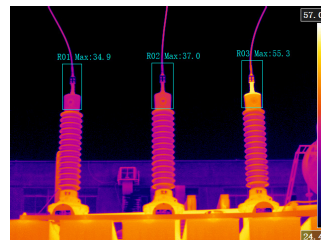
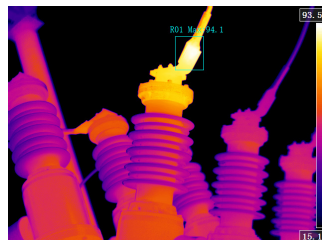
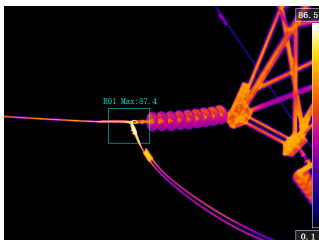
Better performance with  $\pm 2^{\circ}\text{C}$  as accuracy



Support 4G wireless image transmission



Support remote viewing and control



## SPECIFICATIONS

Model	HK-WY30-A	HK-WY30-B
Detector type	Uncooled FPA, VOX material	
IR Resolution	384x288	640x512
Thermal Sensitivity/NETD	<40mK (@30°C)	
Spectral Range	8~14μm	
Field of View	45.4°x34.8°	24.0°x18.1°
Spatial resolution (IFOV)	2.61mrad	0.66mrad
Focus	Electric	
Palette	8 color palettes	
Temperature measurement settings	10 points, 10 boxes, 5 lines	
Object temperature range	-20°C~+150°C (low temperature range)/0°C~+410°C (medium temperature range)	
Optional temperature range	+300°C~+650°C/+300°C~+2,000°C/other ranges (high temperature range)	
Temperature measurement accuracy	±2°C or ±2% of readings	
<b>Visible light performance</b>		
Sensor type	1/2.7" Progressive Scan CMOS	
Resolution	1920×1080 2 million pixels	
Focal length	6mm	
Field of view	50.6°x37.7°	
Minimum illumination	Color: 0.01 Lux	
<b>Distance measuring laser</b>		
Measurement range	0.05~40m	
Resolution	1mm	
Measurement accuracy	±(1.5mm+Dx0.5 ten thousandths)	
Data output rate	Continuous measurement mode: 1~10Hz; Fastcontinuous measurement mode: about 10Hz/20H	
Laser type	630 ~670nm, ClassII, <1mW	
Indicator light	Red laser	
Operation mode	Single data/continuous data/external trigger	
<b>Ultrasonic</b>		
Sensor type	Non-contact ultrasonic sensor (AA)	
Detection frequency band	40±1kHz	
Detection dynamic range	-8dBμV~68dBμV	
Sensor sensitivity	-65dB(0dB=1volt/μbar RMS SPL)	
linearity errors	≤10%	
<b>Alarm</b>		
Alarm mode	SMS alarm, email alarm	
<b>Image display</b>		
Temperature trend curve	Support	
Historical infrared image display	Support	
<b>Image transmission</b>		
Image transmission mode	Real-time or scheduled transmission to mobile phone APP or PC software via 4G	

## SPECIFICATIONS

<b>Storage</b>	
Remote storage method	Cloud storage
Local storage method	32G SD card storage (up to 128G)
Image format	.jpg (including temperature data)
<b>Power supply</b>	
Power supply method	Solar charging (no external power supply required)
Working mode	Wake-up working time and automatic sleep time can be set
Standby time	2 hours of sunlight per day, no need to charge for general use
Battery life	+25°C ambient temperature, no solar charging, general use ≥40 days
Maximum power consumption	≤4W
Standby power consumption	≤0.1W
<b>Environmental parameters</b>	
Working temperature and humidity	-20°C~65°C, ≤95% RH
Protection level	IP66