

# SCIENCE-GRADE INFRARED THERMAL IMAGER

RD300 RD300 Pro RD300 Plus



Optional lens : 48° /12° /6°、  
macro lens 1.25x、 macro lens 3x



High definition and high efficiency



Provide flexible solutions for R&D



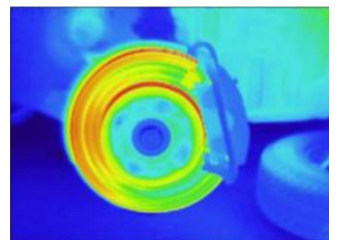
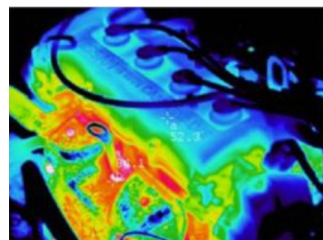
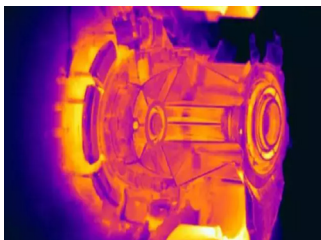
Better performance with  $\pm 2^{\circ}\text{C}$  as accuracy



Supporting software with powerful functions



Support customization function development



## SPECIFICATIONS

Model	RD300	RD300 Pro	RD300 Plus
Detector type	Uncooled FPA		
Detector material	Amorphous silicon or VOX material		
Spectral Range	8-14μm		
IR Resolution	384x288	640x480	1024x768
Thermal Sensitivity/NETD	≤0.06°C (@30°C)	≤0.04°C (@30°C)	≤0.05°C (@30°C)
Standard lens	28°	24°	28°
Spatial resolution (IFOV)	1.30mrad (28° lens); 2.26mrad (48° lens); 0.68mrad (12° lens); 0.34mrad (6° lens)	0.66mrad (24° lens); 1.39mrad (48° lens); 0.33mrad (12° lens); 0.16mrad (6° lens)	0.48mrad (28° lens); 0.92mrad (50° lens); 0.24mrad (14° lens); 0.12mrad (7° lens)
Focus distance	0.5m to infinity(Standard lens), 30mm~200mm (macro lens)		
Focus	Manual, electric, automatic focus		
Optional lens	6°, 12°, 48°, Macro lens 3x, Macro lens 1.25x		
<b>Temperature measurement</b>			
Object temperature range	-40°C~+150°C (low temperature range)/0°C~+410°C (medium temperature range)		
Optional temperature range	+300°C~+2000°C (high temperature range)		
Temperature measurement accuracy	±2°C or ±2% of readings		
<b>Power supply and interface</b>			
Battery voltage	DC 12V		
Operating power consumption	≤5W	≤7W	≤8W
Data stream	Total radiation temperature flow		
Data analysis	Standard PC network equipment analysis and processing software		
Data transmission mode	100/1000M Ethernet transmission		
Power interface	φ5.5 DC power interface		
Network interface	RJ45 interface		
Other interfaces (Optional)	485 communication interface, relay switch, synchronous trigger, analog video, micro SD card interface		
<b>General parameters</b>			
Working temperature	-20°C~50°C		
Working humidity	≤90%RH		
Storage temperature	-40°C~70°C		
Tripod mounting interface	UNC ¼"-20		
Size	226.8mmx91mmx86.5mm		
Weight	≤1kg		