

SF₆ GAS THERMAL IMAGER

SF300 SF600



5.8" TFT touch screen



Quantum well infrared detector



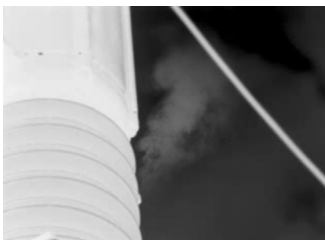
Gas cloud detection technology



NETD:<0.025°C , Monitoring for smaller leaks



Better performance with $\pm 2^{\circ}\text{C}$ as accuracy



SPECIFICATIONS

Model	SF300	SF600
Detector type	QWIP	
IR resolution	320×256	640×512
Thermal sensitivity/NETD	<0.025°C (@30°C)	<0.023°C (@30°C)
Pixel spacing	30μm	15μm
Standard lens	14.5°	
Spectral Range	10.3-10.8μm, Central wavelength 10.55μm	
Viewfinder	Built-in color viewfinder not less than 1024×768	
Lens identification	Automatic identification	
Image frame rate	30Hz	
Temperature measurement range	-20°C~70°C (gas mode), -20°C~150°C (low temperature mode), 0°C~410°C (medium temperature mode)	
Temperature measurement accuracy	±2°C or ±2% of reading	
Digital camera	Built-in 500W pixel digital camera with LED light	
Laser distance measurement	40 meters	
Lens focusing method	Manual, automatic	
Display screen	5.8" sunlight visible touch screen	
Touch screen	Capacitive touch screen	
Palettes	10 color palettes	
Temperature measurement settings	Supports up to 10 points, 10 boxes, 5 lines, including maximum/minimum/average values	
Line temperature distribution diagram	1 line temperature distribution diagram, including maximum/minimum temperature values	
Full screen Max temperature/Min temperature	Support, automatically capture the maximum/minimum temperature of the full screen	
Image adjustment	Automatic/manual; linear or columnar; can lock the maximum, minimum or temperature range	
Digital zoom	x1,x2,x4,x8	
Picture in picture	Show infrared image area on visible light image	
IMIX	Support	
Image fusion	Support	
Text annotation	Select text annotations from the preset list and edit them in the thermal imager	
Super resolution	Increase the number of pixels to 4 times the original	
Optical device transmission correction	Manual/automatic, based on the signal from the internal sensor	
Radiance correction	Automatic, based on the input value of the emissivity	
Atmospheric transmission correction	Automatic, based on the input value of the distance, atmospheric temperature and relative humidity	
Alarm method	Automatic sound and light alarm for the set temperature value /above/below/automatically	
Storage method	32G high-speed SD card	
Infrared image format	.jpg (including full temperature data)/.png (including full temperature data)	
Visible light image format	.jpg/.png	
Infrared video format	MP4 video/full temperature irv video stored in SD card	
USB	Use USB for communication	
GPS satellite positioning (optional)	For outdoor use, the screen displays the latitude and longitude of the device's location, and the photos taken and saved can display the latitude and longitude in the analysis software	

SPECIFICATIONS

Video output	HDMI
Video output interface	Standard HDMI interface
Battery type	Removable rechargeable lithium battery
Power supply voltage	DC 12V 5A
Battery working time	General use >2 hours at 25°C
Power Management	Support sleep mode (with automatic shutdown function, users can set 5 minutes automatic shutdown, 20 minutes automatic shutdown and no automatic shutdown)
Charging method	Charger or direct charge
Operating temperature	-20°C~40°C
Storage temperature	-40°C~70°C
Humidity (operating and storage)	<95%, non-condensing
Tripod installation	UNC $\frac{1}{4}$ "-20
External interface	Large SD, SIM, HDMI, USB