

# ACOUSTIC IMAGING CAMERA

## SW234



Gas leak detection, partial discharge detection, etc.



Support photo taking and video recording



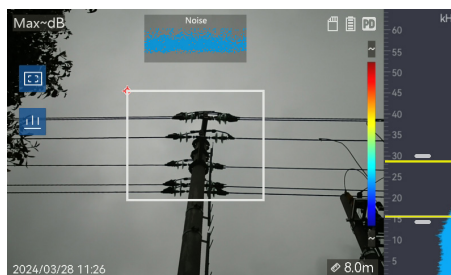
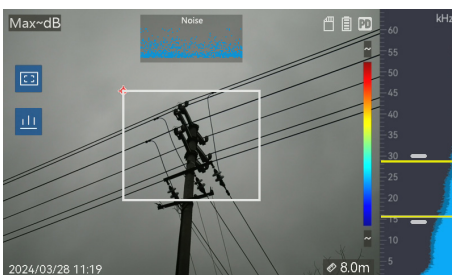
Microphone with 234 digital silicon MIC array



High detection frequency band: 2kHz-100kHz



Long detection distance: 0.3~200 meters



## SPECIFICATIONS

| <b>Model</b>                          |   | <b>SW234</b> |
|---------------------------------------|---|--------------|
| <b>Acoustic parameters</b>            |   |              |
| MIC                                   | 234 digital silicon MIC array   |              |
| MIC Sensitivity                       | -26dBFS@1kHz  |              |
| Frequency Bandwidth                   | 2kHz ~ 100kHz   |              |
| Distance                              | 0.3-200m (depending on source signal strength)                                  |              |
| Sound Intensity Display               | Highest point   |              |
| Acoustic Detection Mode               | Gas leak detection mode, partial discharge detection mode                       |              |
| Image Frequency                       | 25Hz  |              |
| Maximum Sound Pressure Level          | 120dB   |              |
| Minimum Imaging Sound Pressure Level  | <20dB SPL, frequency dependent  |              |
| PRPD Graph                            | Supported   |              |
| Acoustic Sampling Rate                | 200kHz  |              |
| Location Error                        | <0.05m@1m, 40kHz  |              |
| Gas Leakage Loss Display              | Supported   |              |
| Gas Leakage Amount Display            | Supported   |              |
| Gas Leakage Level Display             | Supported   |              |
| Partial Discharge Detection           | Supported   |              |
| Partial Discharge Type Identification | Point discharge, floating discharge, surface discharge, particle discharge      |              |
| <b>Visible light</b>                  |   |              |
| Visible Light Lens Focal Length       | 2.7mm   |              |
| Field of View                         | 66°   |              |
| Maximum Image Size                    | 2592x1944   |              |
| Image Resolution                      | 800x480   |              |
| Video Resolution                      | 800x480   |              |
| Focus Mode                            | Fixed focus   |              |
| <b>Image display</b>                  |   |              |
| Display screen                        | 5-inch sunlight-readable display screen, 800x480 pixels                         |              |
| Image mode                            | Eight color palettes including Iron Red/Gray/Reverse Iron Red/Reverse Gray.     |              |
| <b>Wireless transmission</b>          |   |              |
| WIFI                                  | Supports transferring images to mobile phones/computers via Wi-Fi.              |              |
| 4G                                    | Supports remote real-time image transmission to mobile phones/computers via 4G. |              |
| Bluetooth                             | Supports recording and playback via Bluetooth headsets.                         |              |
| <b>USB transfer</b>                   |   |              |
| USB transfer                          | Transfer pictures from the SD card in your device to your PC using USB.         |              |
| <b>GPS</b>                            |   |              |
| GPS                                   | Built-in GPS automatically adds location information to the image.              |              |
| <b>Image storage</b>                  |   |              |
| Storage method                        | 32G high-speed SD card.   |              |
| Picture format                        | .jpg  |              |
| Video format                          | .mp4  |              |

## SPECIFICATIONS

| <b>Power system</b>               |  |
|-----------------------------------|--|
| Battery Type                      | Removable rechargeable lithium battery |
| Supply voltage                    | DC 12V                                 |
| Battery working time              | At 25°C, for general use >2 hours      |
| Charging method                   | Two-seat charger                       |
| <b>Physical parameters</b>        |  |
| Weight                            | 900g                                   |
| Size                              | 133x147x271mm                          |
| <b>Use environment parameters</b> |  |
| Working temperature               | -20°C~55°C                             |
| Storage temperature               | -40°C~70°C                             |
| Humidity (operating and storage)  | ≤95%, non-condensing                   |
| inspection report                 | IP54                                   |