

FIREFIGHTING THERMAL IMAGING CAMERA

XF200-A1 XF200-A2 XF200-B1 XF200-B2



2 meters fall down proof



Can withstand 260°C high temperature



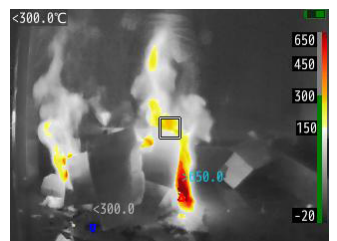
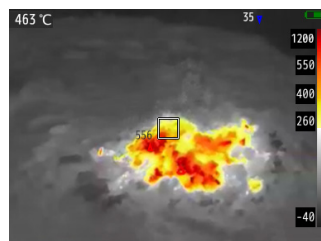
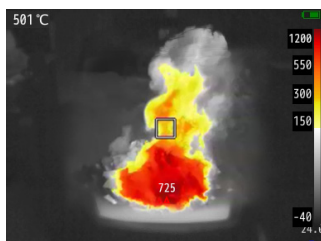
IP67 Waterproof and dustproof







Save more than 10000 images



Support WIFI transmission



SPECIFICATIONS

Model	XF200-A1	XF200-A2	XF200-B1	XF200-B2
Product Appearance				
Detector type	Uncooled FPA, VOX material			
IR Resolution	160x120	256x192	160x120	256x192
Thermal Sensitivity/NETD	≤50mK (@25°C)			
Spectral Range	8~14μm			
Field of View	56°x42.2°			
Spatial resolution (IFOV)	6.11mrad	3.82mrad	6.11mrad	3.82mrad
Focus	Fixed			
Minimum focusing distance	0.15m			
Display	3.5-inch sunlight-readable display, 320x240 pixels			
Temperature measurement				
Temperature range	-20~650°C, automatic range switching			
Temperature measurement accuracy	±2°C or 2% of readings			
Visible light				
Visible camera	Built-in 500W pixel digital camera			
Image display				
Palette	4 color palettes			
Image mode	Infrared, visible light, picture-in-picture, image fusion			
Laser parameters				
Laser indication	Built-in laser pointer			
Laser Distance Measurement	—	—	Support	Support
Electronic compass				
Electronic compass	—	—	Support	Support
Car Charger				
Car Charger	—	—	Support	Support
Wireless transmission				
WIFI	Support, support preview SD card pictures through WIFI			
4G	Support, Transmit real-time images to mobile phones via 4G, view cloud images			
Measurement and analysis				
Digital zoom	2x , 4x			
Full screen maximum temperature	Supported, automatically capture the highest temperature of the full screen			
Image storage				
Storage method	32G high-speed SD card			
Infrared image format	.jpg (including full temperature data)			
Visible light image format	.jpg			
Infrared video format	.mp4			

SPECIFICATIONS

Power system	
Battery type	Removable rechargeable explosion-proof lithium battery
Power supply voltage	DC12V
Battery working time	General use >4 hours at 25°C
Charging method	Dual charger
Physical parameters	
Weight	0.6kg (including battery)
Dimensions	238x106x60mm
Use environment parameters	
Working time at specific temperature	80°C:working within 30 minutes, 120°C:working within 10 minutes, 260°C:working within 5 minutes
Operating temperature	Continuous operation at -20~55°C
Protection level	IP67
Fall protection	2m
Transmission terminal parameters (optional)	
System memory	4GB
Storage capacity	128GB (supports Micro SD (TF) card expansion, up to 512GB)
Processor	Octa-core
Operating system	Android
Screen	8.4 inches, resolution 2560 x1600, multi-touch screen
Network	4G
WiFi function	Support
Data interface	USB Type-c
Product size	206.4x125.2x7.4mm
Product weight	About 320g