

FIREFIGHTING THERMAL IMAGING CAMERA

XF300-A XF300-B XF300-C



2 meters fall down proof



Can withstand 260°C high temperature



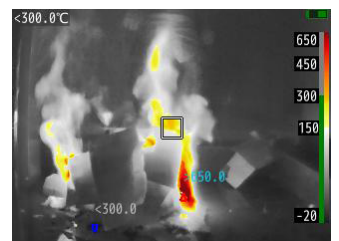
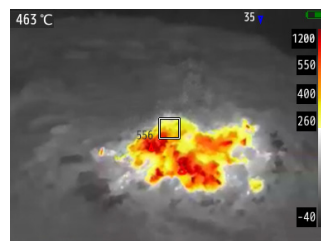
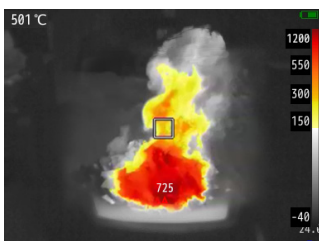
IP67 Waterproof and dustproof






Save more than 10000 images



Support WIFI transmission



SPECIFICATIONS

Model	XF300-A	XF300-B	XF300-C
Product Appearance			
Detector type	Uncooled FPA, VOX material		
IR Resolution	384x288		
Thermal Sensitivity/NETD	<40mK (@25°C)		
Spectral Range	8~14μm		
Field of View	44.2°x33.9°		
Focus	Fixed		
Minimum focusing distance	0.3m		
Display	4" sunlight-readable display, 320x240		3.5" sunlight-readable display, 320x240
Temperature measurement			
Temperature range	-20°C~+150°C (Low temperature range)/ 0°C~+410°C (Medium temperature range)/ +300°C~+2000°C (High temperature range),Automatic range switching		
Temperature measurement accuracy	±2°C or 2% of readings		
Visible light			
Visible camera	—	Built-in 500W pixel digital camera	
Image display			
Palette	4 color palettes		
Image mode	Infrared	Infrared, visible light, picture-in-picture, image fusion	
Laser parameters			
Laser indication	—	Built-in laser pointer	
Laser Distance Measurement	—	Support	
Electronic compass			
Electronic compass	—	Support	
Car Charger			
Car Charger	Support		
Wireless transmission			
WIFI	Support,support preview SD card pictures through WIFI		
4G	Support, Transmit real-time images to mobile phones via 4G, view cloud images		
Measurement and analysis			
Digital zoom	2x , 4x		
Full screen maximum temperature	Supported, automatically capture the highest temperature of the full screen		
Image storage			
Storage method	32G high-speed SD card		
Infrared image format	.jpg (including full temperature data)		
Visible light image format	.jpg		

SPECIFICATIONS

Infrared video format	.mp4	
Power system		
Battery type	Removable rechargeable explosion-proof lithium battery	
Power supply voltage	DC12V	
Battery working time	General use >4 hours at 25°C	
Charging method	Dual charger	
Physical parameters		
Weight	1.2kg(including battery)	760g(including battery)
Dimensions	282x130x121mm	257x107x80mm
Use environment parameters		
Working time at specific temperature	80°C:working within 30 minutes, 120°C:working within 10 minutes, 260°C:working within 5 minutes	
Operating temperature	Continuous operation at -20~55°C	
Protection level	IP67	
Fall protection	2m	
Transmission terminal parameters (optional)		
System memory	4GB	
Storage capacity	128GB (supports Micro SD (TF) card expansion, up to 512GB)	
Processor	Octa-core	
Operating system	Android	
Screen	8.4 inches, resolution 2560 x1600, multi-touch screen	
Network	4G	
WiFi function	Support	
Data interface	USB Type-c	
Product size	206.4x125.2x7.4mm	
Product weight	About 320g	