

HANDHELD INFRARED THERMAL IMAGER

XF200-D XF200-E



3.5" LCD touch screen



5 million pixels visual camera



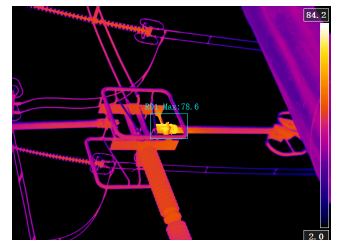
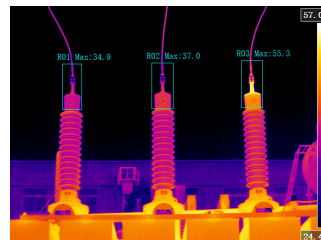
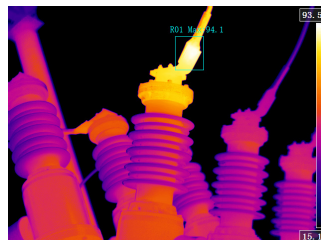
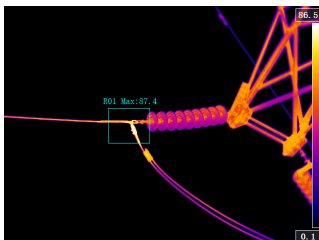
Better performance with $\pm 2^{\circ}\text{C}$ as accuracy



Support WIFI transmission



Save more than 10000 images



SPECIFICATIONS

Model	XF200-D	XF200-E
Detector type	Uncooled FPA, VOX material	
IR Resolution	256x192	384x288
Thermal Sensitivity/NETD	≤50mK(@30°C)	
Spectral Range	8~14μm	
Field of View	50°x37.2°	
Spatial resolution (IFOV)	3.33mrad	2.22mrad
Focus	Fixed	
Focal Length	3.6mm	5.4mm
Temperature measurement		
Object temperature range	-20°C~+150°C (low temperature range)/0°C~+410°C (medium temperature range)	
Optional temperature range	+300°C~+650°C	+300°C~+650°C/Other ranges (high temperature range)
Temperature measurement accuracy	±2°C or 2% of readings	
Visible light		
Digital camera	Built-in 500W pixel digital camera	
Image display		
Palette	10 color palettes	
Touch screen	Capacitive touch screen	
Wireless transmission		
WIFI	Support, support preview SD card pictures through WIFI	
Bluetooth (optional)	Support Bluetooth headset playback	
4G (optional)	Transmit real-time images to mobile phones via 4G, view cloud images	
Measurement analysis		
Temperature measurement settings	Countless points, lines, and areas, including maximum/minimum/average values	
Full screen maximum/minimum temperature	Support, automatically capture the highest/lowest temperature of the entire screen	
Emissivity correction	Automatically, based on the input value of emissivity	
Atmospheric transfer correction	Automatically, based on the input value of distance, atmospheric temperature, and relative humidity	
Alarm		
Alarm method	Automatically sound and light alarm for temperature above or below the set value	
Image storage		
Memory card type	32G (standard), 128G (optional)	
Infrared image format	.jpg (including full temperature data)	
Visible light image format	.jpg	
Infrared video format	H.264 video	
Text annotation	Can add text annotations and store them with the image	
Power system		
Battery type	2pcs of removable rechargeable lithium battery	
Power supply voltage	DC12V	
Battery operating time	General use working time of a single battery >4 hours at 25°C	

SPECIFICATIONS

Charging method	Dual charger
Physical parameters	
Weight	450g (including battery)
Dimensions	230x105x57mm
Environmental parameters	
Operating temperature	-20°C~55°C
Storage temperature	-40°C~70°C
Humidity (operating and storage)	≤95%, non-condensing
Packaging level	IP54